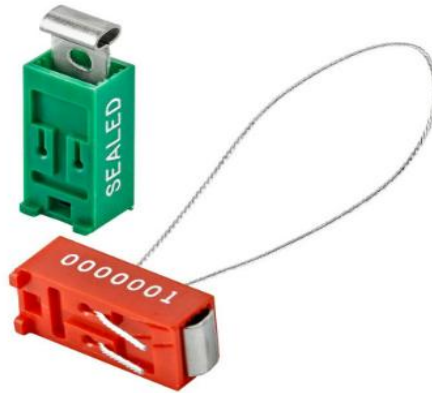




Tri-Dam Project  
Aquatic Invasive Mussel Species  
Prevention Program

**April 2025**

# Tulloch Boat Inspection Seals



## What Are Inspection Seals Used For?

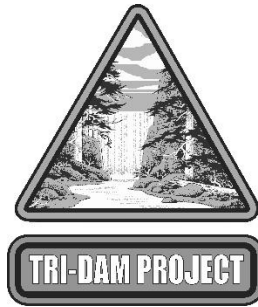
Inspection seals are an essential part of the **Aquatic Invasive Species (AIS) Prevention Program**. These seals help ensure that boats and trailers are **clean, drained, and dry** before re-entering the lake, preventing the introduction of invasive species such as quagga, zebra, and golden mussels.

Red Bands: Tri-Dam Project is using red seals for 30-day quarantine. Red seals are used for vessels that will be kept clean, drained, and dry for 30 days. A red seal indicates the vessel requires quarantine. A red seal will be attached through the hull of the boat and trailer, ensuring that the vessel remains secured during the quarantine. The inspector will issue a receipt (via email or text) with a matching serial number to the seal. **Quarantine Rule:** The vessel must remain CLEAN, DRAINED, and DRIED, and must not enter any other bodies of water during this period. If the seal is missing, broken, or tampered with, the boat will require a full re-inspection at a future date.

Green Bands: When a vessel has met the 30-day quarantine and exits Tulloch, a bander/inspector will examine the vessel and trailer to ensure they are **clean and drained**. A green seal will be attached through the hull of the boat and trailer, ensuring that the vessel remains secured until its next launch. The inspector will issue a receipt (via email or text) with a matching serial number to the seal. **Quarantine Rule:** The vessel must remain CLEAN, DRAINED, and DRIED, and must not enter any other bodies of water during this period. If the seal is missing, broken, or tampered with, the boat will require a full re-inspection and 30-day quarantine at a future date.

If a boat has an inspection green seal, it provides a faster re-entry process for those returning to Tulloch after being previously inspected and sealed. However, even with a red or green seal, the Watercraft Inspection Decontamination (WID) database verification process is still required prior to launch to ensure prevention. If the seal is missing, broken, or tampered with, the boat will require a full re-inspection at a future date.

Based on the designated launch location there may be a fee for inspection and seals.



## What Boaters Can Expect

### Tulloch Boat Launching Protocols

#### **Arriving at the Approved Designated Location for Inspection**

There are three protocols for launching your boat, depending on the vessel type (motorized or non-motorized) and seal color (red or green). Upon arrival, you will be greeted by a bander who will help you guide you through the next steps. Please note that the approved policy and procedures were approved by Tri-Dam Board on March 20, 2025 and can be found on [www.tridamproject.com](http://www.tridamproject.com)

#### **Protocol 1 – Boat Inspection for a 30-Day Banding with a Seal**

The vessel must be **CLEAN, DRAINED, and DRY**.

All vessels must meet the criteria or will be turned away until this requirement is met.

- **Initial Vessel Inspection**

- The Inspector will inspect the boat and do a thorough inspection. The vessel owner must come prepared and provide the following to the inspector:
  1. Visible CF #
  2. The inspector will verify that the drain plug is unplugged from the vessel.
  3. Open all compartments for inspection.
  4. The inspector will enter the vessel to examine inside compartments and anchor.
  5. Present Boaters card at the time of launch and meet all the HOA specific requirements

- **30-Day Banding Seal Attached**

- After successful inspection and seal has been attached, the bander will enter the successful inspection into the WID system

- **Completion of Inspection**

- The inspection will be finalized, and members will receive an optional receipt via text.

## Protocol 2 – Vessel Inspection after 30-Day Banding Quarantine is Met

The vessel must be **CLEAN, DRAINED, and DRY**.

- **Inspection Results & Verified Documentation**
  - If the vessel must arrive **CLEAN, DRAINED, and DRY**
  - **The red seal and initial inspection will be verified in the WID**, once verified the boater will be cleared to launch.
  - **If the boater is a member of the HOA they will need to follow the HOA guidelines for a boater sticker(s), or if a family member/guest of the boater will need a day pass for up to 7-days.**
  - **Boaters who have been banded at an alternative location with a 30-day quarantine must be follow the above guidelines to launch. Failure to do so will result in a vessel that does not pass.**
- If the vessel **fails**, a new **red seal** will be placed on the vessel. Reason for a failed inspection include, but are not limited to, when the seal has been removed or tampered with. The boater must get re-banded and quarantine for additional 30 days.
  - **Quarantine Rule:** The vessel must remain **CLEAN, DRAINED, and DRIED**, and must not enter any other bodies of water during this period.

## Protocol 3 – Boater Exiting the Water

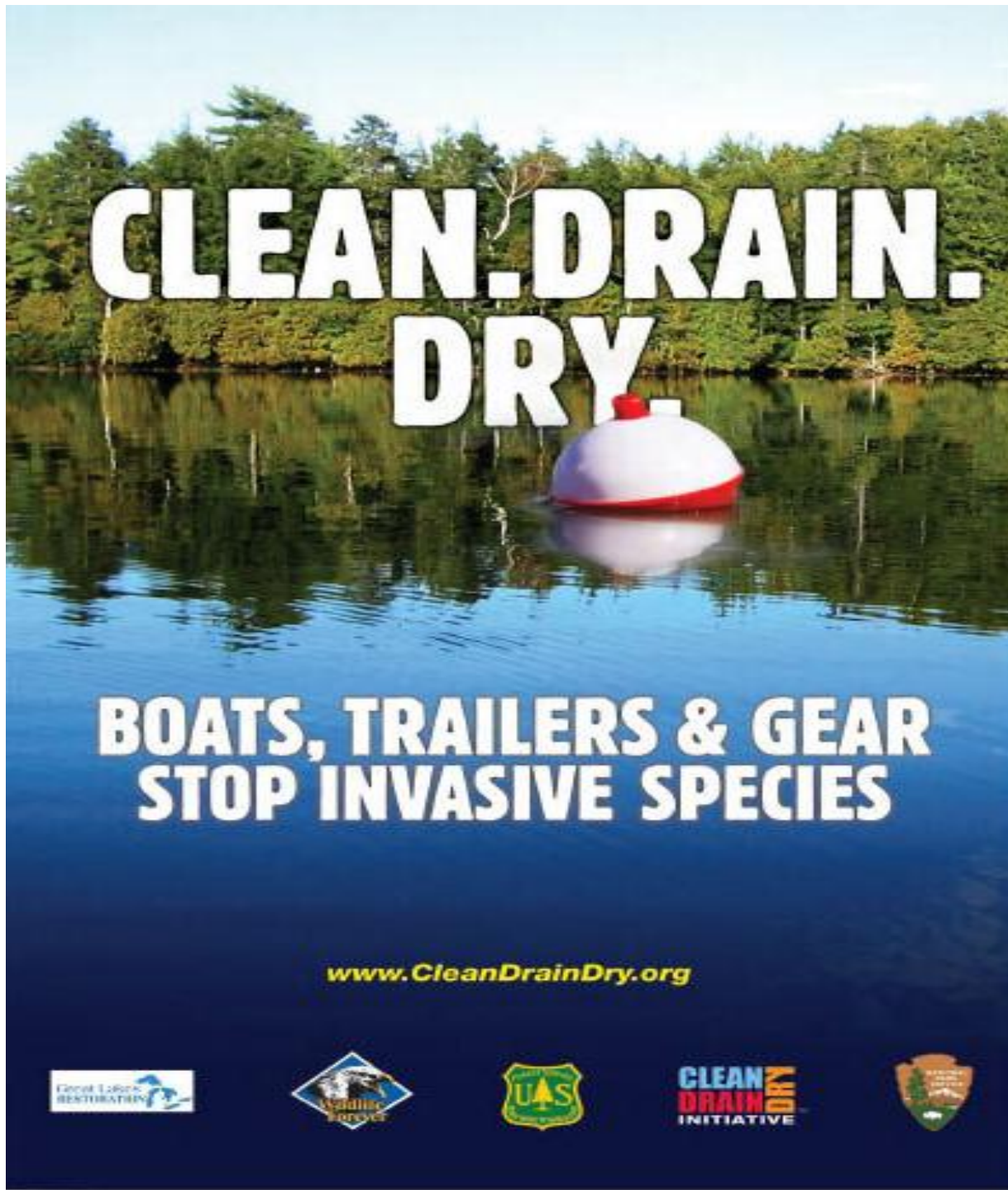
- **Vessel Exiting Waters**
  - Boater must be re-banded with a green seal in order to reenter the water without waiting 30 additional days.
- **Vessel and Trailer will receive a green seal upon the Exit Inspection**
  - If the vessel's **green seal** is removed or tampered with prior to returning to launch the boat, must be re-banded and quarantine for an additional 30 days.
  - **Quarantine Rule:** The vessel must remain **CLEAN, DRAINED, and DRIED**, and must not enter any other bodies of water during this period.

## Protocol 4 - Launching a Non-Motorized Vessel (Kayak, Paddleboard, etc.)

All Non-Motorized Equipment and Vessels must be **CLEAN, DRAINED, and DRY**.

The banders will be required to inspect non-motorized vessels before entering Tulloch. Upon arrival, the recreational user will be required to self-inspect their equipment ensuring it is **CLEAN, DRAINED, and DRY**.

- The self-inspection form will be required to be filled out & required to make visible on the dash on the non-motorized vessel user's vehicle.
- All non-motorized vessels will be required to self-inspect before entering Tulloch. It is important that we ask where the last body of water was the watercraft in (on the form) and ensure the boater's equipment has been **CLEAN, DRAINED, and DRY. (The self-inspection form will be required to all non-motorized watercrafts users.**



#### Additional Resources

Stop Aquatic Hitchhikers: [www.stopaquatic hitchhikers.org](http://www.stopaquatic hitchhikers.org)

Clean. Drain. Dry: [www.cleandraindry.org](http://www.cleandraindry.org)

Play Clean Go: [www.playcleango.org](http://www.playcleango.org)

Habitattitude: [www.habitattitude.net](http://www.habitattitude.net)

Don't Let it Loose: [www.dontletitloose.com](http://www.dontletitloose.com)